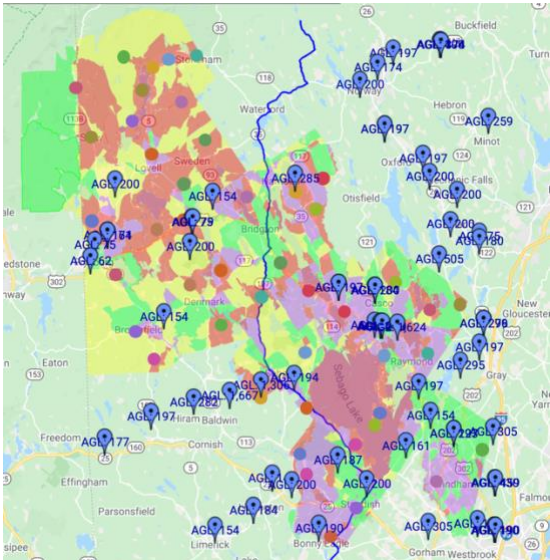
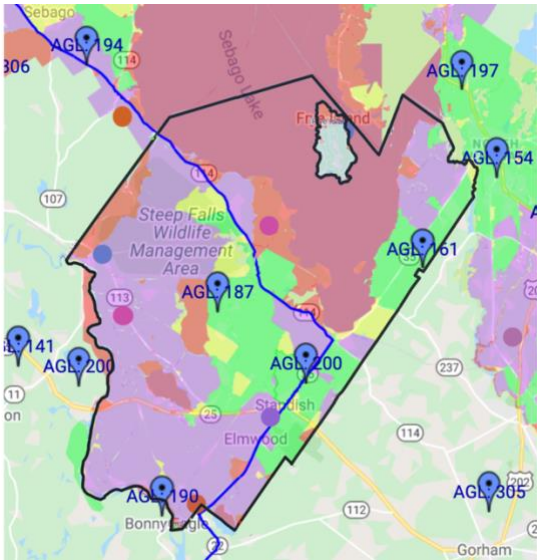


# GEO Model Breakdown: Town of Standish

## Recommended GEO Model (Hybrid)



- **Region:**
  - Coverage = 91%
    - 79.7% fiber vs. 11.3% fixed wireless
  - Cost/household = \$2,867
  - Gross Cost = \$78 million
- **Standish:**
  - Coverage = 99.4%
    - 93.8% fiber vs. 5.6% fixed wireless
  - Cost/household = \$2,867
  - Gross Cost = ~\$9.8 million

## Full Fiber to the Home (FTTH) Model

- **Region:**
  - Coverage = 100%
  - Cost/household = \$4,651
  - Gross Cost = \$108 million
- **Standish:**
  - Coverage = 100%
  - Cost/household = \$4,651
  - Gross Cost = \$15.8 million

## Full Fixed Wireless Model\*

- **Region:**
  - Coverage = 81%
  - Cost/household = \$271
  - Gross Cost = \$6.3 million
- **Standish:**
  - Coverage = 90.2%
  - Cost/household = \$271
  - Gross Cost = \$921,942

## Questions for Standish

- What are town needs/assumptions as far as:
  - % Coverage?
  - % Fiber vs. Fixed Wireless?
  - Estimated take rate (model assumes ~45%)?
- Any change requests for the model?
- How does the project timeline fit in with and compare to Standish's ideal timeline?
- After looking through the GEO Model breakdown, do you have any other follow up questions?
  - Please send these questions via email to Clara McCool ([cmccool@gpcog.org](mailto:cmccool@gpcog.org)), Tony Plante ([tplante@gpcog.org](mailto:tplante@gpcog.org)), and Joe Oliva ([joliva@gpcog.org](mailto:joliva@gpcog.org))

### **Contacts**

*Project Lead:*

[Tony Plante, GPCOG](#)

*Project Support:*

[Clara McCool, GPCOG](#)

[Joe Oliva, Resilience Corps Fellow, GPCOG](#)

*Project Consultant:*

[John Dougherty, Mission Broadband](#)

[Mark van Loan, Mission Broadband](#)